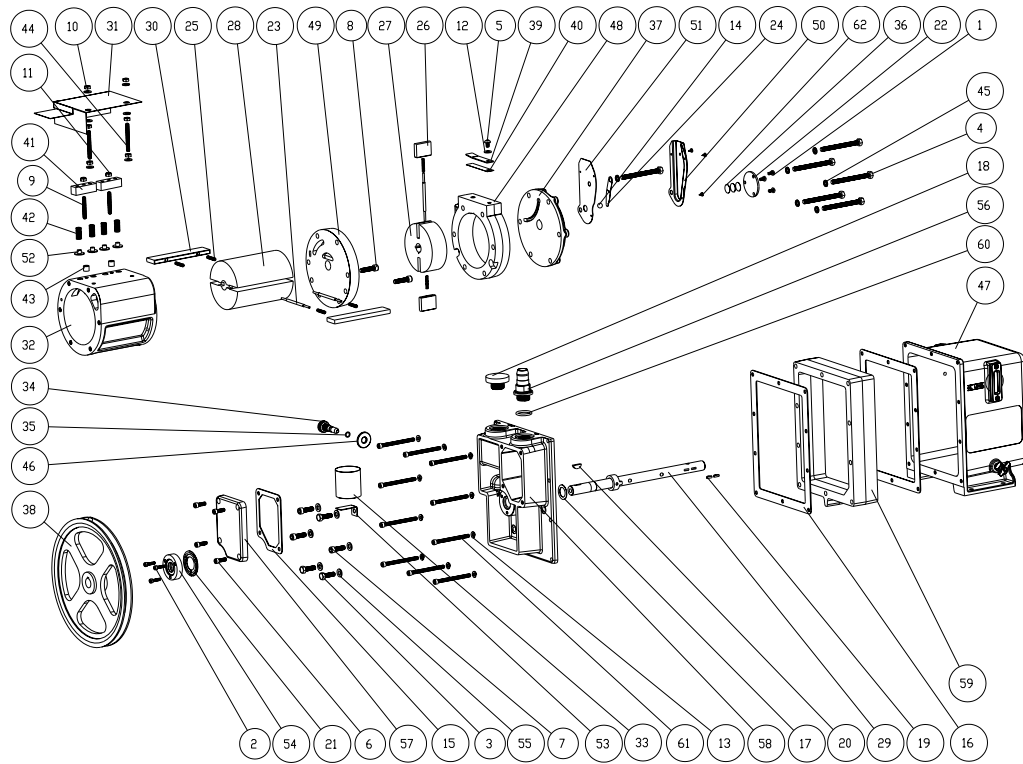


Section 8: PARTS LIST & EXPLODED VIEWS



Model 1376

67-0894
Rev. 09 04/05

PARTS LIST FOR MODEL 1376

ITEM	QTY	P/N	A*	B*	DESCRIPTION	ITEM	QTY	P/N	A*	B*	DESCRIPTION
1	3	2-00-2706			SCREW PAN HD 10-32 x 3/8" LG.	32	1	41-1688		1	LARGE RING
2	3	2-00-6712			SCREW SOCKET HD 10-32 x 3/4" LG.	33	1	41-1692	1	1	AIR FILTER, MESH
3	3	2-01-0316			SCREW HEX HD 5/16-18 x 1" LG.	34	1	41-1736			GAS BALLAST VALVE
4	6	2-01-0356			SCREW HEX HD 5/16-18 x 3-1/2" LG.	35	1	41-1742	1	1	O-RING #011 BUNA-N
5	1	2-01-5106			SCREW SOCKET HD 1/4-20 x 3/8" LG.	36	3	41-1766			THRUST DISK
6	4	2-01-6112			SCREW SOCKET HD 1/4-20 x 3/4" LG.	37	1	41-2045			SMALL END PLATE, FINISHED
7	3	2-01-6316			SCREW SOCKET HD 5/16-18 x 1" LG.	38	1	41-2074			PULLEY w/ SET SCREW
8	2	2-01-6320			SCREW SOCKET HD 5/16-18 x 1-1/4 LG.	39	1	41-2153	1	1	EXHAUST VALVE, UPPER
9	2	2-01-8128			SETSCREW 1/4-20 x 1-3/4" LG.	40	1	41-2154	1	1	EXHAUST VALVE, LOWER
10	6	2-31-0112			HEX NUT 1/4-20, STEEL	41	2	41-2156			VALVE BLOCK
11	2	2-36-9900			HEX LOCK NUT 1/4-20	42	4	41-2158	4	4	VALVE SPRING
12	7	2-61-0000			WASHER, STEEL 3/16	43	2	41-2159	2	2	VALVE BLOCK SPACER
13	10	2-63-0193			WASHER, LOCK 1/4" MEDIUM	44	2	41-2175			SETSCREW 1/4-20 x 2.25" LG
14	1	4-40-1200	1	1	STEEL BALL 3/8" DIA.	45	6	41-2363			WASHER 5/16 ID x 1/2 OD
15	1	41-0234	1	1	GASKET, INTAKE CHAMBER COVER	46	1	41-2757			LOCK NUT
16	1	41-0403	2	2	GASKET, OIL CASE	47	1	61-8101			OIL CASE ASSEMBLY
17	1	41-0508	1	1	WASHER, THRUST	48	1	61-8108D			EXHAUST RING
18	1	41-0612			DUST CAP	49	1	61-8250C			CENTER PLATE
19	2	41-0613	2	2	WOODRUFF KEY #404	50	1	61-8309B			PRESSURE RELEASE TUBE #1
20	1	41-0624	1	1	WOODRUFF KEY	51	1	61-8310A			PRESSURE RELEASE TUBE #2
21	1	41-0643			GASKET, SEAL	52	4	61-8314A	4	4	VALVE
22	1	41-0672			SHAFT END PLATE	53	1	61-8329A			BRACKET, INTAKE SCREEN
23	3	41-0696	3	3	SPRING HOLDER	54	1	61-8378A			SHAFT SEAL ASSEMBLY
24	1	41-0992	1	1	PRESSURE RELEASE VALVE	55	6	61-8456A			WASHER 5/16, COPPER
25	6	41-1304	6	6	VANE SPRING	56	1	61-8468A			HOSE ADAPTER 13/16 HOSE ID
26	2	41-1487	2		VANE, SMALL	57	1	61-8671			COVER, FINISHED
27	1	41-1518			ROTOR, EXHAUST	58	1	61-8685			LARGE END PLATE
28	1	41-1682			LARGE ROTOR	59	1	61-8687			OIL CASE SPACER
29	1	41-1683			SHAFT	60	1	61-9284A	1	1	O-RING #214 VITON
30	2	41-1684	2		VANE, INTAKE	61	10	62-0015			SCREW SOCKET HD 1/4-20 x 3.125" LG
31	1	41-1686			BAFFLE ASSEMBLY	62	3	62-0259			SCREW #6-1/4, SELF-TAPPING
								1-99-5282	1	1	SEALANT, 6 cc
								1401D	1	1	MECHANICAL SEAL OPTION**

A* : MAJOR REPAIR KIT CAT#1376K-06

B* : MINOR REPAIR KIT CAT#1376K-05

** 1401D is mechanical seal kit includes mechanical seal, gasket and 3 screws

*** MINOR REPAIR KIT CAT # 1376K-11 FOR REFRIGERATION SERVICE PUMPS
USES NEOPRENE SEALS

67-0894
Rev. 09 04/05