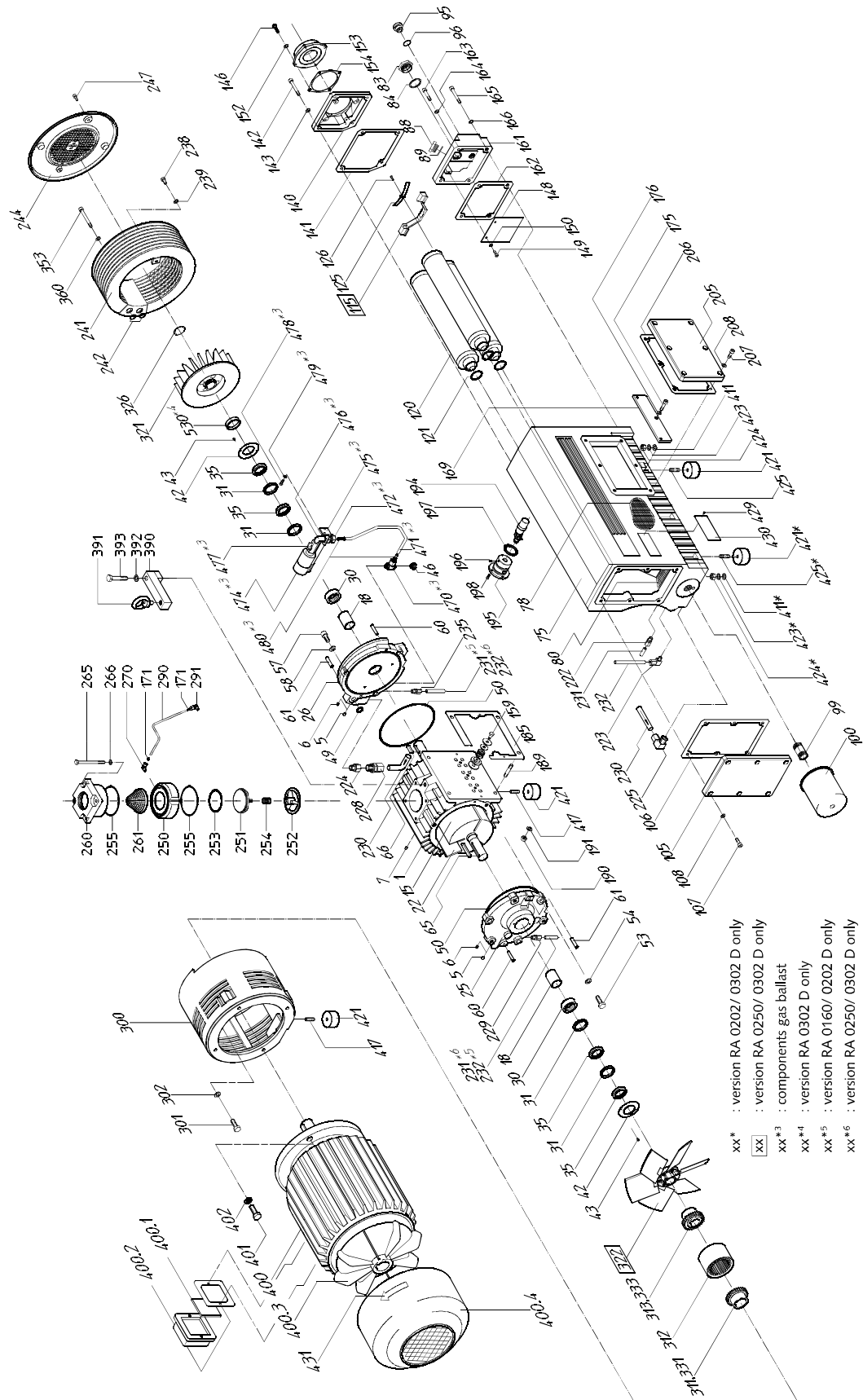


Exploded view



- xx* : version RA 0202/ 0302 D only
- xx1 : version RA 0250/ 0302 D only
- xx*3 : components gas ballast
- xx*4 : version RA 0302 D only
- xx*5 : version RA 0160/ 0202 D only
- xx*6 : version RA 0250/ 0302 D only

Spare parts

NOTE: When ordering spare parts or accessories acc. to the table below please always quote the type and the serial no. of the vacuum pump. This will allow Busch service to check if the vacuum pump is compatible with a modified or improved part.

This parts list applies to a typical configuration of the standard vacuum pump. Depending on the specific order deviating parts data may apply.

Pos.	Part	Qt	R 5 0160 D R 5 0202 D
18	Sleeve	2	0472 000 008
22	Vanes	3	0722 516 573
30	Needle bearing	2	0473 507 139
35	Shaft seal	4	0487 000 012
49	O-ring	2	0486 000 587
50	O-ring	2	0486 000 543
60	Taper pin	4	0437 502 718
61	Parallel pin	4	0437 534 364
84	Seal	1	0480 000 231
88	Plug	1	0710 000 002
89	Seal	1	0482 000 021
89	O-ring	1	0486 000 513
95	Drain plug	1	0710 000 010
96	O-ring	1	0486 000 505
100	Oil filter	1	0531 000 001
106	Oil separator seal	1	0481 503 784
120	Exhaust filter	2	0532 000 508
121	O-ring	2	0486 000 512
141	Seal	1	0481 503 786
159	Discharge valve	2	0916 529 297
162	Seal	1	0481 503 785
185	Oil separator seal	1	0481 516 780
197	O-ring	1	0486 516 620
206	Oil separator seal	1	0481 502 719
242	O-ring	2	0486 000 587
253	O-ring	1	0486 000 526
255	O-ring	2	0486 000 531
261	Mesh screen	1	0534 000 041

Pos.	Part	Qt	R 5 0250 D R 5 0302 D
18	Sleeve	2	0472 000 008
22	Vanes	3	0722 516 729
30	Needle bearing	2	0473 507 139
35	Shaft seal	4	0487 000 012
49	O-ring	2	0486 000 587
50	O-ring	2	0486 000 543
60	Taper pin	4	0437 502 718
61	Parallel pin	4	0437 534 364
84	Seal	1	0480 000 231
88	Plug	1	0710 000 002
89	Seal	1	0482 000 021
89	O-ring	1	0486 000 513
95	Drain plug	1	0710 000 010
96	O-ring	1	0486 000 505

100	Oil filter	1	0531 000 001
106	Oil separator seal	1	0481 502 719
120	Exhaust filter	2	0532 000 508
121	O-ring	2	0486 000 512
141	Seal	1	0481 502 721
159	Discharge valve	2	0916 529 297
162	Seal	1	0481 502 720
185	Oil separator seal	1	0481 516 781
197	O-ring	1	0486 516 620
206	Oil separator seal	1	0481 502 719
242	O-ring	2	0486 000 587
253	O-ring	1	0486 000 526
255	O-ring	2	0486 000 531
261	Mesh screen	1	0534 000 041

Wearing parts kit

Wearing parts kit	Description	R 5 0160 D R 5 0202 D	R 5 0250 D R 5 0302 D
Set of seals	consisting of all necessary seals	0990 516 589	0990 516 591
Overhaul kit	consisting of set of seals and all wearing parts	0993 516 588	0993 516 590
Service kit	consisting of oil filter, exhaust filters and o-rings	0992 516 594	0992 516 595

Accessories

Accessories	R 5 0160 D R 5 0202 D	R 5 0250 D R 5 0302 D
Inlet filter upright with paper cartridge	0945 000 142	0945 000 142
Inlet filter horizontal with paper cartridge	0945 000 143	0945 000 143
Replacement paper cartridge	0532 000 004	0532 000 004
Gas ballast, side fan cover	0916 516 610	0916 516 610
Gas ballast with solenoid valve, side fan cover	0916 518 385	0916 518 385
Silencer	0947 000 083	0947 000 083
Exhaust filters pressure gauge	0946 504 734	0946 504 734
Vacuum regulating unit, connection G 1 ^{1/2}	0947 000 482	0947 000 482
Motor safety switch: Adjustment range 6,0-10,0 A, 400 V, 50 Hz	0985 500 993	-
Motor safety switch: Adjustment range 10,0-16,0 A, 400 V, 50 Hz	0985 500 994	0985 500 994
Motor safety switch: Adjustment range 16,0-25,0 A, 230 V, 50 Hz	0985 509 146	0985 509 146
Motor safety switch: Adjustment range 25,0-32,0 A, 230 V, 50 Hz	-	0985 507 623